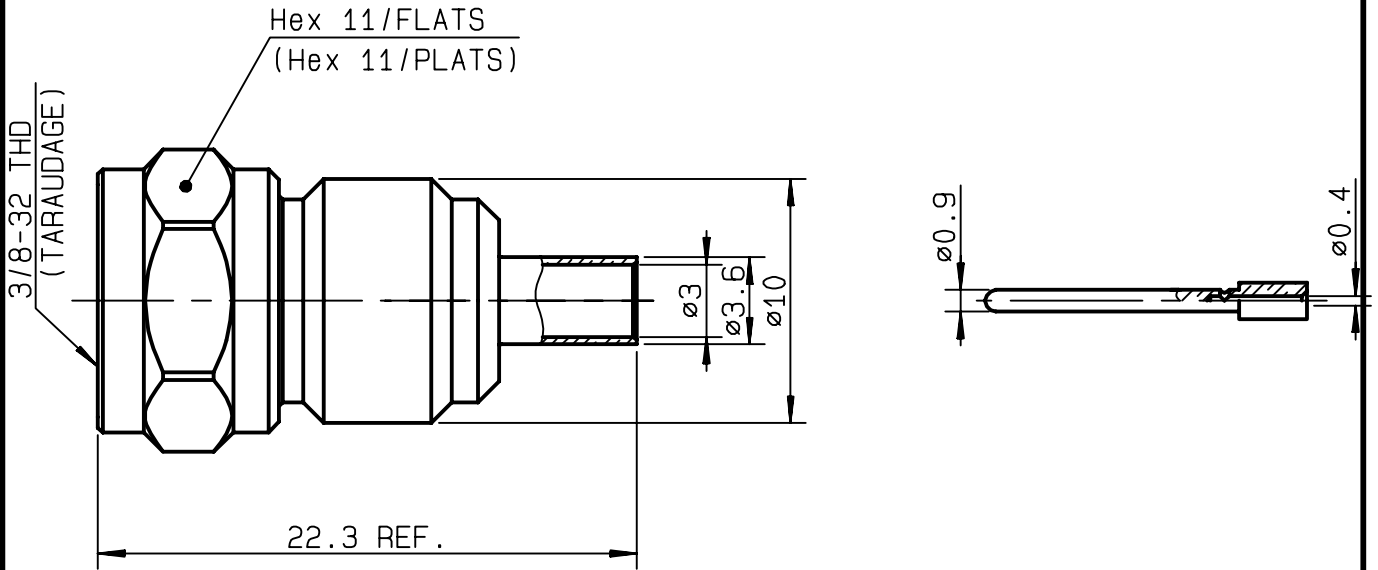


**STRAIGHT PLUG CRIMP TYPE
CABLE 2.6/75 S**

R139.077.000
SERIES DT-F



NOMINAL IMPEDANCE	75 Ω	CABLES : RG 179 RG 187
FREQUENCY RANGE	0-3 GHz	
TEMPERATURE RATING	-40/+80 °C	OTHERS CHARACTERISTICS CABLE RETENTION 40 N Mini CENTER CONTACT RETENTION Axial force - mating end NA N Mini Axial force - opposite end NA N Mini Torque NA cm.N Mini RECOMMENDED TORQUES Mating 60 cm.N Panel nut NA cm.N Clamp nut NA cm.N
V.S.W.R	1.02 + .1 x F(GHz)Maxi	
RF INSERTION LOSS	0.085 √F(GHz) dB Maxi	
VOLTAGE RATING	500 Veff Maxi	
DIELECTRIC WITHSTANDING VOLTAGE	1500 Veff Mini	
INSULATION RESISTANCE	5000 MΩMini	
HERMETIC SEAL	NA Atm.cm ³ /s	
LEAKAGE (pressurized only)	NA	
MECHANICAL DURABILITY	500 Cycles	
WEIGHT	5.92 gr	
SPECIFICATION		

CONNECTOR PARTS	MATERIALS	FINISH	(all values are given) in micrometers
BODY	BRASS	BBR 2	
OUTER CONTACT			
CENTER CONTACT	BRASS	SILVER 3	
INSULATOR	PTFE	-	
GASKET		-	
OTHERS PIECES	BRASS	BBR 2	

ISSUE	CREATION DATE	FILE PART-NUMBER
0237B00	20/08/1997	EPC 97-01



BAFFERT

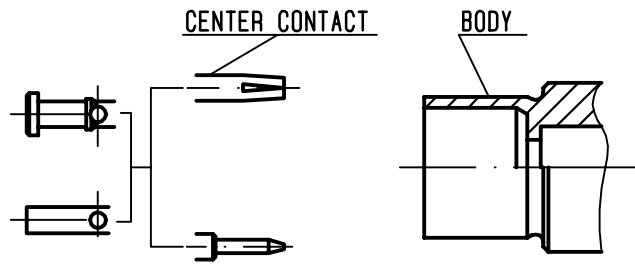
The information given here is subject to change without notice.
Design changes may be in order to improve the product .

Connect to the future



R139.077.000

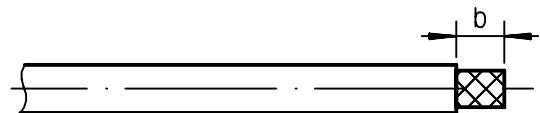
ISSUE **0237B00** SERIES **DT-F**



①

Strip the cable .

-
-
-
-

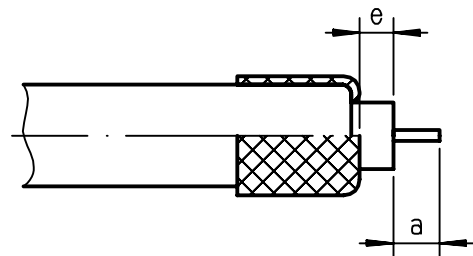


Stripping	a	b	c	d	e
inch	0.118	0.177	0	0	0.059
mm	3	4.5			1.5

②

Fold braid back and trim off extra braid .
Trim the inner conductor as shown .

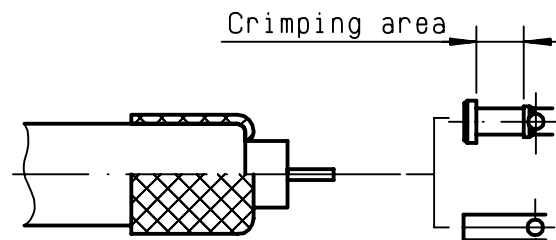
-



③

Slide the center contact until it bottoms against cable dielectric .
Crimp the center contact , crimping tool R 282 281 000 (Position 7)
+ positionner R282 967 500 or crimping tool M22520/2-01 + positionner R282 967 500

-
-



④

Slide sub-assembly into the connector body .
Crimp the body , crimping tool R 282 211 000 (Hex. : 3.25) or crimping tool R 282 293 000 (M22520/5-01)
+ dies R 282 235 003 (M22520/5-03)

